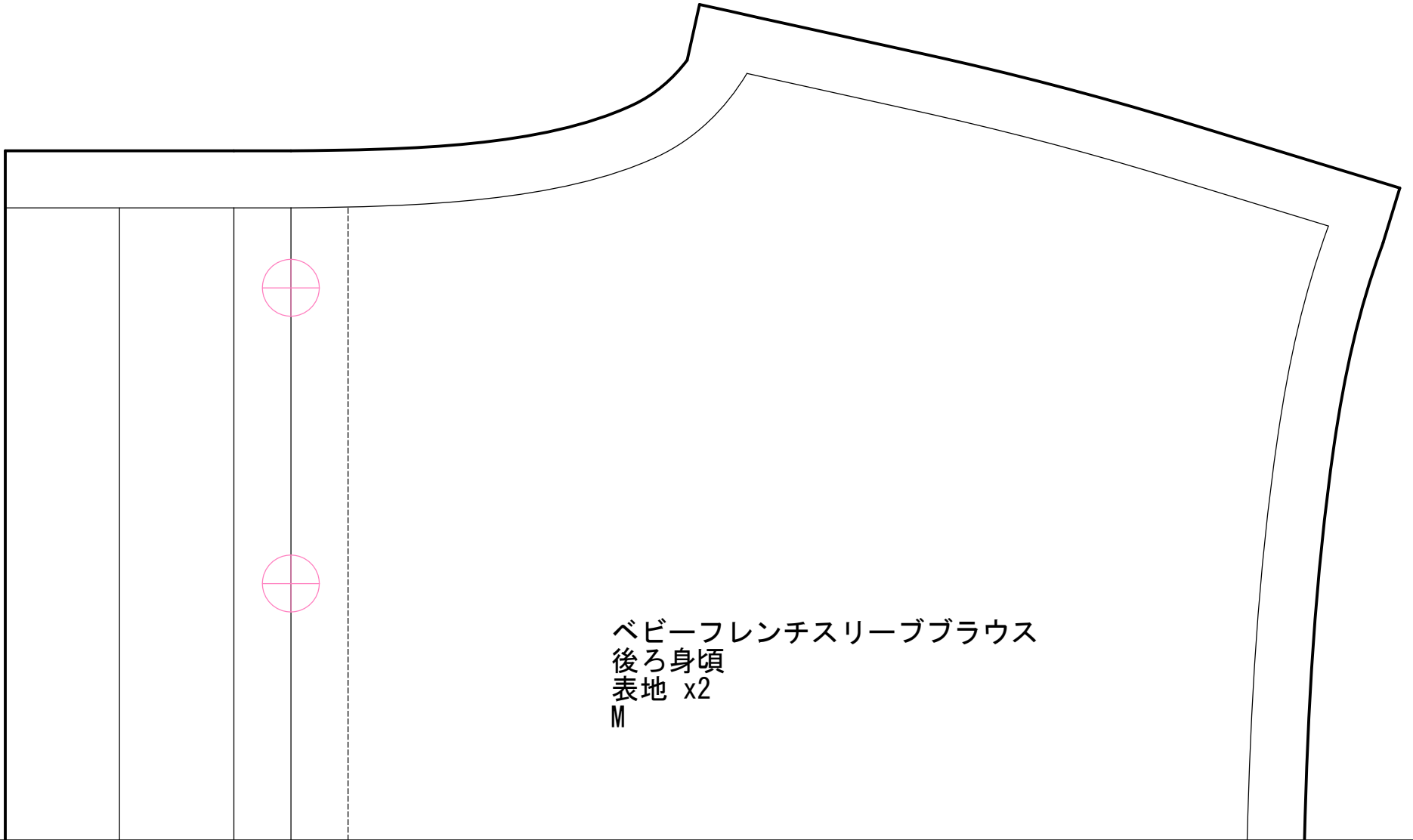
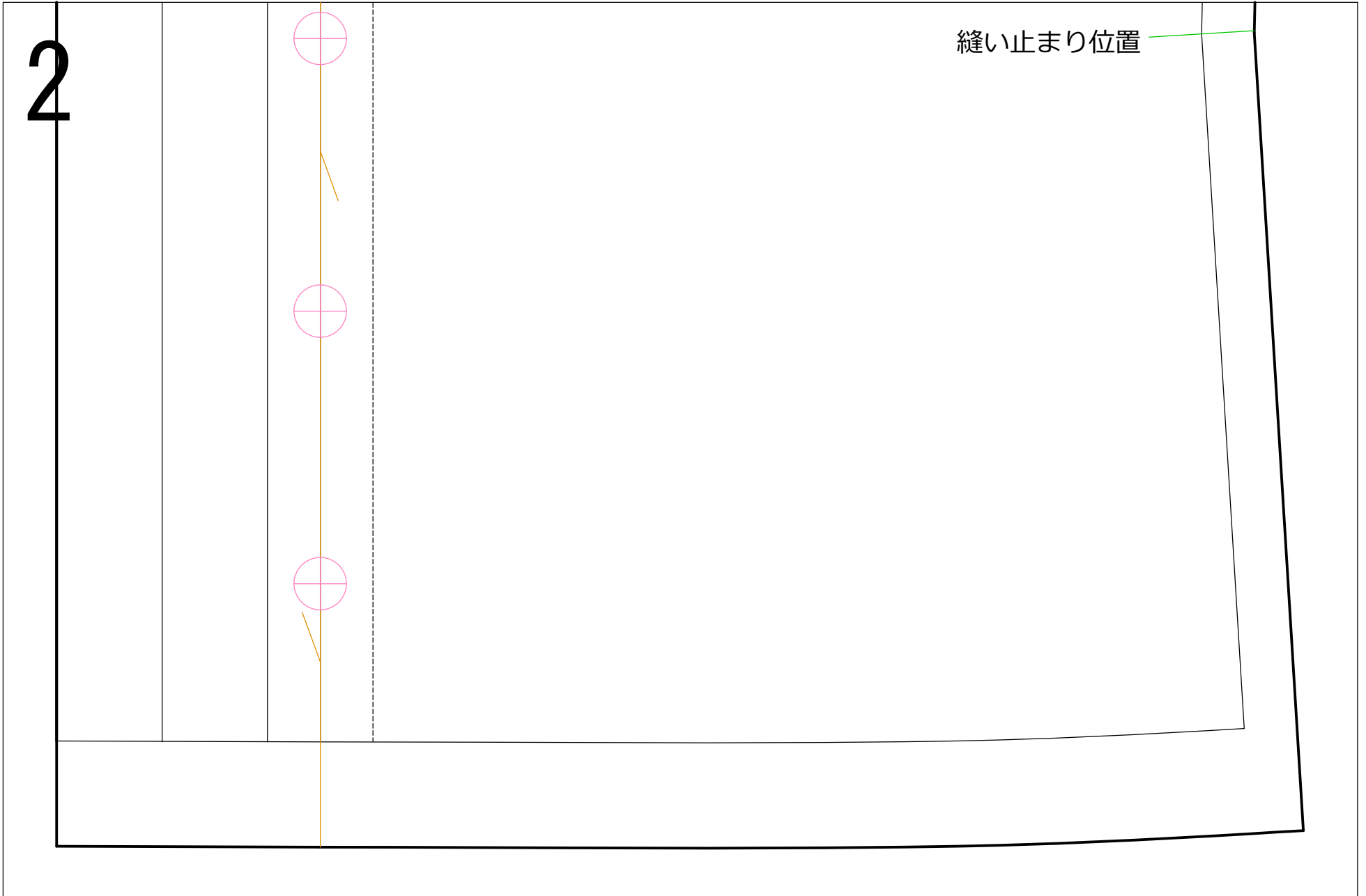


1



ベビーフレンチスリーブブラウス
後ろ身頃
表地 x2
M



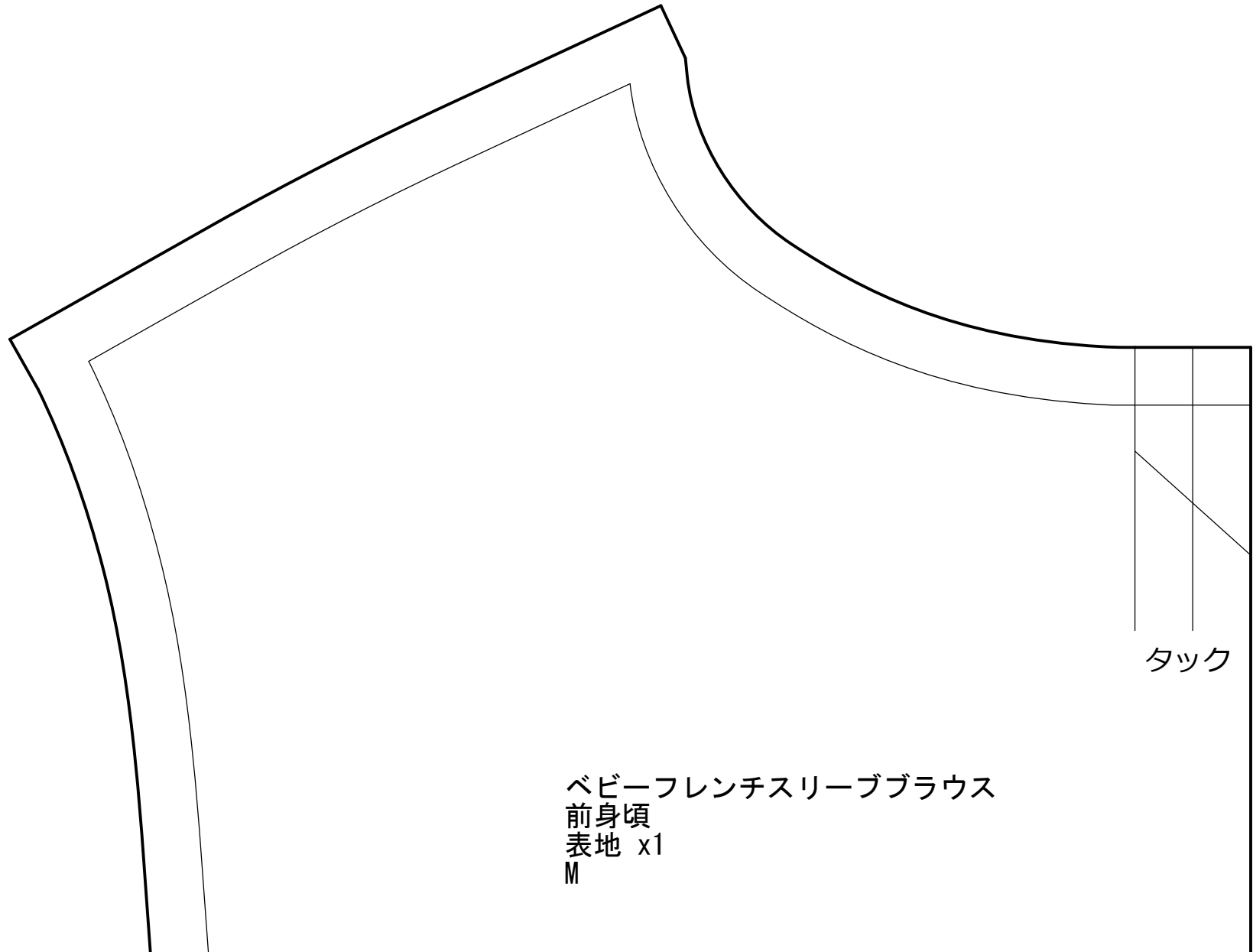
2

縫い止まり位置

3

	ベビーフレンチスリーブブラウス
	衿ぐり見返しテープ
	表地 x1
	M

4

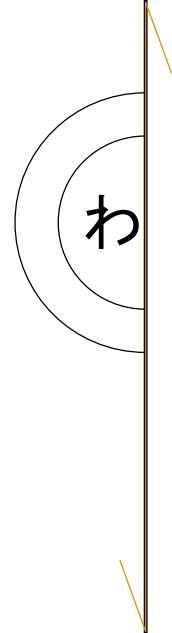


ベビーフレンチスリーブブラウス
前身頃
表地 x1
M

タック

5

縫い止まり位置



6

前中心

A diagram consisting of a large outer rectangle and a smaller inner rectangle. The inner rectangle is positioned such that its left edge is aligned with the left edge of the outer rectangle, but its right edge is shifted to the right. A vertical line is drawn from the top-left corner of the inner rectangle down to its bottom-left corner. An orange diagonal line starts from the bottom-left corner of the outer rectangle and extends upwards and to the right, crossing the top-left corner of the inner rectangle.